

WCAMS 43rd Summer Music Camp 2026



Logo design by Nataliia Baleiko

**CAMP BOOKLET
AND
SCHEDULE**

**JULY 19 - 26, 2026
Brentwood College School,
Mill Bay, B.C.**

Fast Information Sheet

| | |
|----------------------------|--------------------------------------------------------------------------------------------------------------------------------------------------------------------------------------------------------------------------------------------------------------------------------------------------------------------------------------------------------------------------------------------------------------------------------------------------------------------------------------------------------------------------------------------------------------------------------------|
| Camp Directors | Heather Haydu, Ellie Smith and Sean Lampard-Quicke 250-986-4461 (text preferred, but calling works) or e-mail office@wcams.ca . Or look for them in the WCAMS office or at meals. |
| WCAMS Office, Lost & Found | Arts building, A-264. |
| Photocopying | Photocopies of music required for classes will be provided. If you would like to print or copy music for personal “sight-reading” sessions, you may request access to the printer - 10¢ per page - or visit the Cowichan Press (open M, W, F) or the public library, both in Mill Bay, a 10-minute walk from campus. |
| Campus Security (24/7) | Brentwood Security can be reached 24hrs/day at 250-710-1327. |
| Medical emergencies | Call 911. If possible, also inform Campus Security so that emergency responders can be directed accordingly. A first-aid kit is located in the WCAMS Office. |
| Internet access | There is free Wifi available throughout the campus. Turn on wireless on your device, and connect to the Brentwood Guest network. No password is required. |
| Quiet Times | Please be quiet and do not practise in the residence rooms: Mon - Fri: 2pm - 3pm Sun - Thu: 10pm - 8am Fri - Sat: 12am - 8am |
| Laundry facilities | Laundry facilities are available in Mackenzie and Rogers houses: 50¢ per wash, 50¢ per dryer. You must supply your own soap. |
| Parking | There are two parking areas at Brentwood. We ask that those staying in residence leave their car in the long-term parking area during the week, so that day campers can use the parking lot next to the Bunch Centre. Do not park in any of the spots near the dorms; these are for loading and unloading only, or are reserved for year-round residents. There are a few charging stations available on a first-come, first-served basis: at Foote Athletic Centre, across from Tennis courts and in Admissions parking. Please ensure to move your car after it is charged. |
| Commuter Lounge | Day campers can make use of the common rooms in the Allard or Mackenzie dorms, to “hang out” when not busy with classes. |

Welcome to WCAMS 2026!

Please wear your name tag at all times. Name tags will help us get to know one another, and also identify us as part of our group for meals. Faculty members have green highlighting and board members have yellow highlighting on their name tags. Keep an eye out for people with a sticker on their name tag, as they are first-timers and may need some help.

The main communications hub for camp will be the information boards at the entrance to the dining hall. Please check these daily for room changes, rehearsals times and general messages.

Practice Rooms

You may practise in any room not in use by a class. Rooms have sign-up sheets next to their doors. Use PENCIL when signing up for a room, and if you decide later you do not need the room, please have the courtesy to erase your name so that others know the room is available. If you are 10 minutes late, your reserved room will be considered free. Please limit sign-up for any given classroom to 60 minutes a day per group with which you wish to rehearse, or for independent practice.

Refer to the maps on pages 3 and 4 to see where grand, upright, hybrid and digital pianos are located. Please only sign up for a room with a piano if you need a piano (or if there are no other rooms available). We encourage you to practise in your dorm room for individual practice, allowing pianists, day campers and large ensemble groups to use the classrooms.

Please do not practise in the dorms during “Quiet Hour” between 2:00-3:00pm.

Photo and video sharing

Out of respect for your fellow campers and our faculty members, please do not share your photos and videos on public websites (e.g. YouTube or Facebook) without the express permission of all identifiable persons. Faculty concerts must not be posted on any social media, nor distributed in public places.

Noise

The residences have thick walls, but it is warm and we all have our windows open. Please remember to keep the noise down after 10pm. Gatherings should be held in the common areas of the dorm buildings.

Guests

Guests are welcome to attend any concert during the week.

There are no facilities for overnight guests. Please ask your guests to book accommodation at a nearby B&B and to support one of the many local restaurant establishments.

Brentwood College School rules

Brentwood is a non-smoking location as per the BC Tobacco Control Act which extends to all school property, including parking lots, sports fields, driveways, courtyards and any vehicles parked on school property.

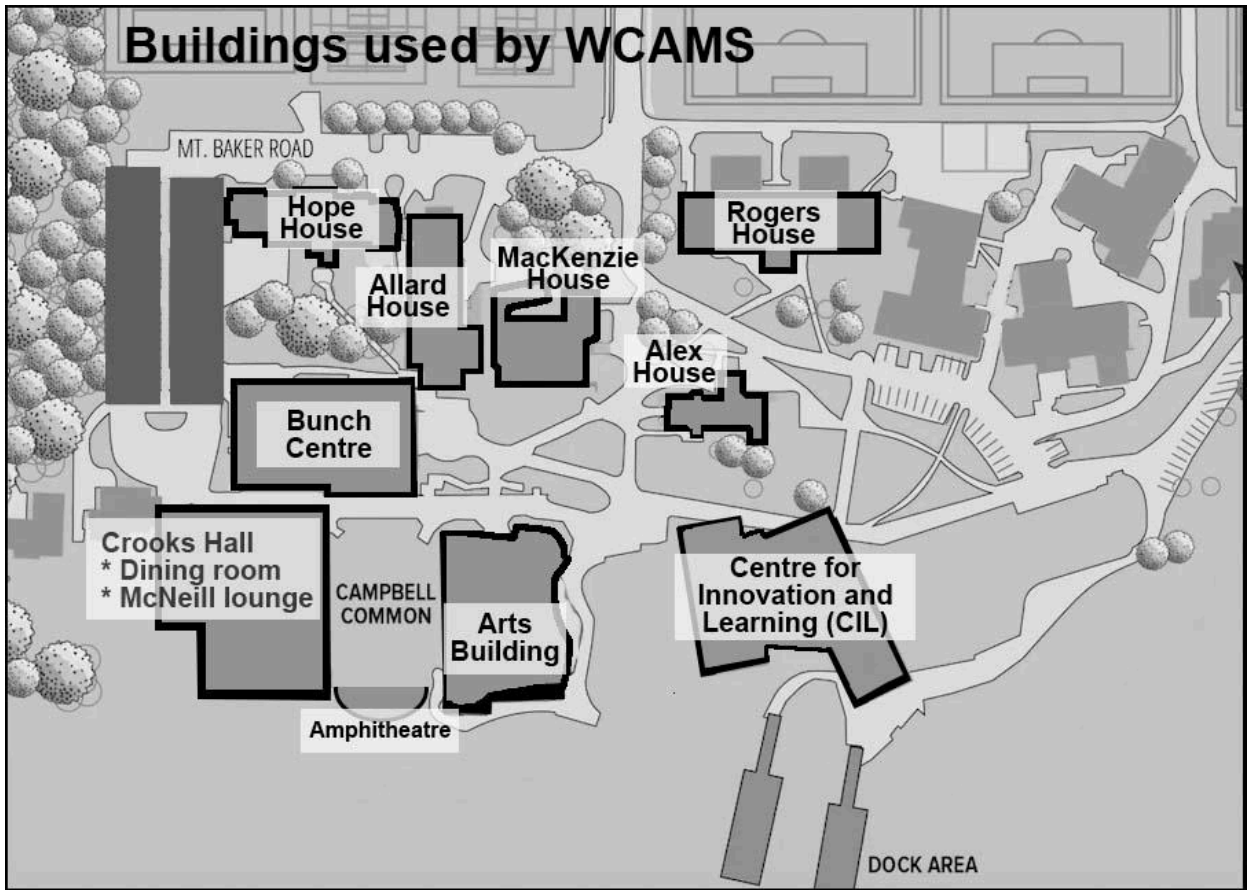
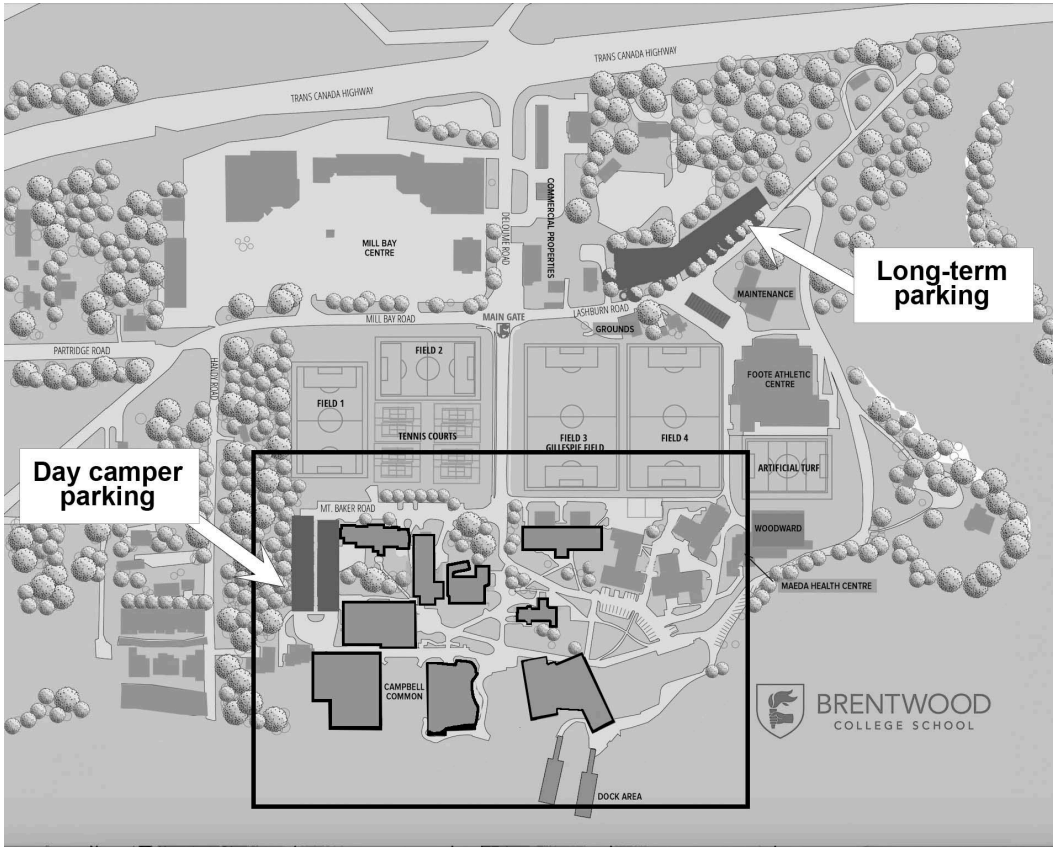
Should any campers be found smoking anywhere on the property, they will be subject to a fine of \$2,500. If you need to smoke, please do so off-campus.

Brentwood is not responsible for theft of any personal property. Dorm buildings and rooms do not lock, however we are told that campus security is diligent and there have never been issues. You can keep valuables in your room, in the desk's top drawer, which can be locked with a padlock. You must supply your own padlock.

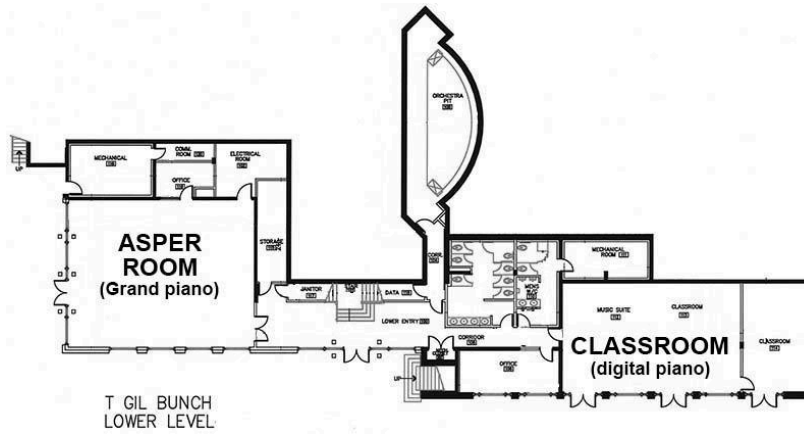
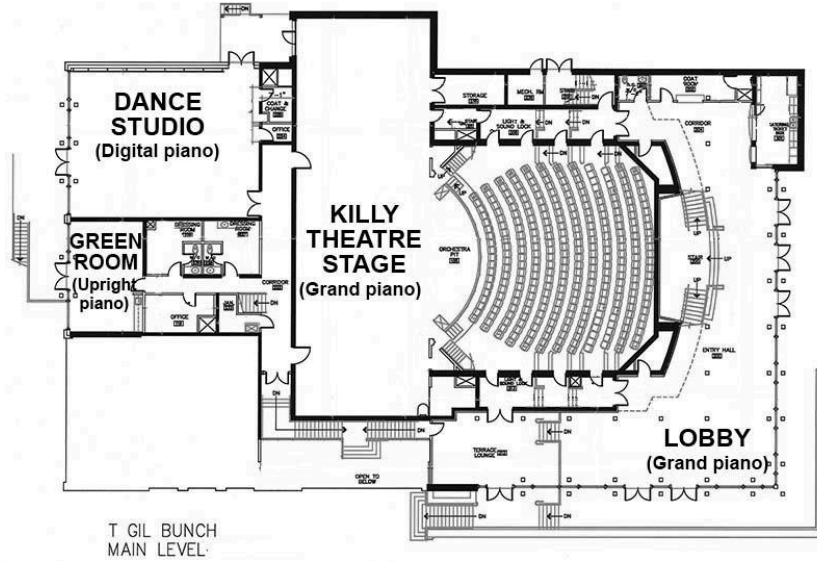
Swimming

Swimming is possible from the school's boat dock. There is no lifeguard, so swimming is at your own risk. Please stay close to the dock and check the tides.

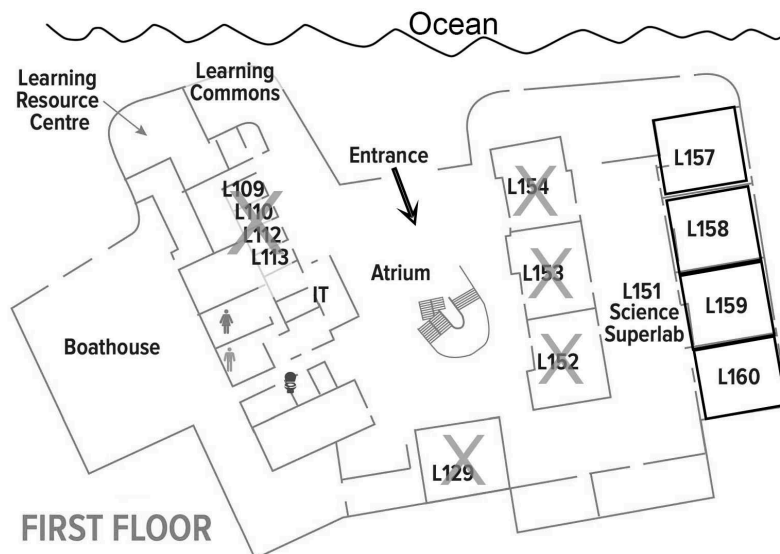
CAMPUS MAP



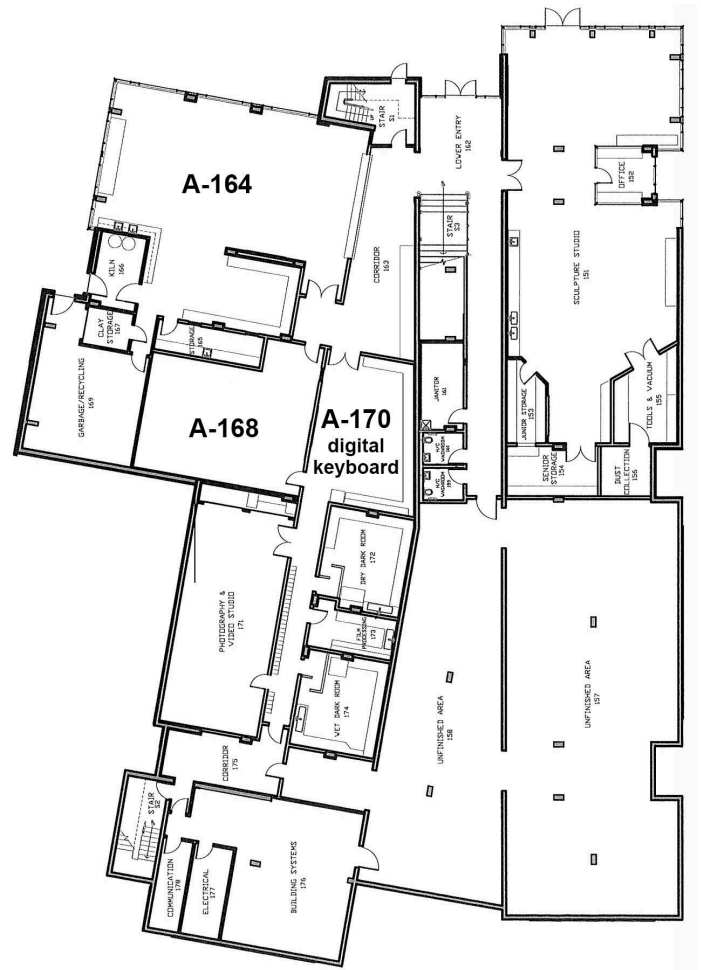
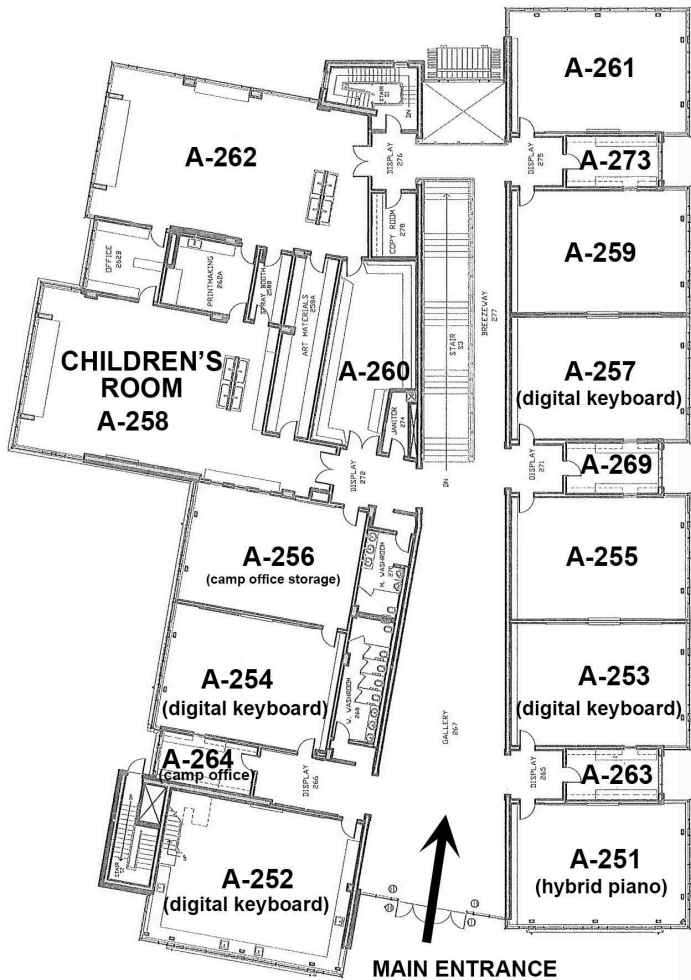
CLASSROOM MAP for BUNCH CENTRE



CLASSROOM MAP for CENTRE FOR INNOVATION AND LEARNING



CLASSROOM MAP for ARTS BUILDING



WCAMS For EVERYONE, donor recognition

Classrooms have been named by leading donors of the 2015-2020 *WCAMS For Everyone* fundraising campaign. View the donor recognition plaques, which are mounted on the wall outside each of these classrooms.

VIRTUOSO SUPPORTERS have chosen names of their favourite composer:

| | |
|----------------|-----------------|
| A-251: STRAUSS | A-256: MAHLER |
| A-252: BACH | A-257: BRAHMS |
| A-253: MOZART | A-259: SCHUBERT |
| A-254: FAURÉ | A-262: LENNON |

MUSIC DIRECTOR'S CIRCLE donors have chosen to honour someone important in their lives:

| |
|-----------------|
| A-168: BAKER |
| A-255: DE MAN |
| A-261: MORAWETZ |

CONCERTMASTER CHAIR supporters are recognized on a plaque affixed to the Concertmaster chair, which resides in the Killy Theatre, where all the various orchestra rehearsals take place.

Recognition for all donors to the *WCAMS For Everyone* campaign can be found at <https://wcams.ca/endowment.html>.

WCAMS is extremely grateful to all those who participated in the fundraising campaign, and still continue to support the WCAMS Endowment Fund which provides financial assistance for participants of the summer music camp.

SCHEDULE

ARRIVAL DAY: SUNDAY, JULY 19

| | | |
|-------------|--------------------------------------------------------------------------------------------------------------------------------------------------------------------------------------------------------------------------------------|---------------------------------|
| 2:00 - 4:00 | CHECK-IN | Crooks Hall: McNeill Lounge |
| 4:15 - 4:45 | Camp Photographer meeting James | Crooks Hall: Dining Room |
| 4:15 - 4:45 | Accessibility meeting re. golf cart route Katie | Crooks Hall: Dining Room |
| 4:15 - 5:15 | Children/Youth Program Meeting Joan (Children/Youth Morning Program Liaison) Sylvie (Children/Youth Afternoon Program Liaison) KimH, Sarah-Lynne, Sierra, Gabrielle, Evelyn, Anastasiia, Patricia, Greg, Marco, Milo | Crooks Hall: McNeill Lounge |
| | All campers in the Children and Youth Programs are required to attend this meeting with their parents / guardians. | |
| 5:30 - 6:00 | FUN MEET-AND-GREET (for ALL campers, all ages) | Crooks Hall: McNeill Lounge |
| 6:00 - 7:00 | DINNER | Crooks Hall: Dining Room |
| 7:00 - 7:45 | PROGRAM ORIENTATION Introduction to Faculty & Courses | Crooks Hall: Dining Room |
| 7:15 - 8:15 | CHILDREN'S GAMES Sarah-Lynne, Gabrielle/Evelyn After the Children's faculty have been introduced, the children will be accompanied by the games leaders for an hour of play. | Outdoors |
| 7:45 - 8:15 | Q&A | Crooks Hall: Dining Room |
| 8:15 - 9:00 | Choral Read-through of Brahms' <i>Schicksalslied</i> Geordie, Eric | Bunch: Dance Studio |
| | Choral Orchestra Read-through of Brahms' <i>Schicksalslied</i> Ajtony | Bunch: Killy Theatre |
| | Faculty Meeting KimA (WCAMS President) | Rogers House: Upper Common Room |

DAILY SCHEDULE: MONDAY TO FRIDAY for ALL

| | | |
|-------------------|--------------------------------------|--------------------------|
| 7:30 - 8:10 | BREAKFAST | Crooks Hall: Dining Room |
| 8:15 - 8:35 | POST-BREAKFAST MINI-CONCERT * | Bunch: Killy Theatre |
| 8:40 - 10:35 | MORNING CLASSES | |
| 10:35 - 10:55 | SNACK | Crooks Hall: Dining Room |
| 10:55 - 1:00 | MORNING CLASSES | |
| 1:00 - 1:45 | LUNCH | Crooks Hall: Dining Room |
| 1:45 - 2:00 | POST-LUNCH MINI-CONCERT * | Amphitheatre |
| 2:00 - 5:40 | AFTERNOON CLASSES | |
| 5:45 - 6:00 | PRE-DINNER MINI-CONCERT * | Crooks Hall foyer |
| 6:00 - 7:00 | DINNER | Crooks Hall: Dining Room |
| 7:00 - 8:00 | EVENING CLASSES | |
| Friday: 6:45-7:45 | | |

MONDAY, TUESDAY, THURSDAY, 8:30 **Faculty Concert** Bunch: Killy Theatre
 Our top-notch faculty are professional musicians active in many performing groups. Three evening concerts at camp present a variety of repertoire by some of these musicians. Come and enjoy some outstanding music!

WEDNESDAY, 8:30 **Cabaret / Participant Showcase** Crooks Hall: Dining Room
 WCAMS campers are a friendly, encouraging bunch of people. If you have been working on a piece and wish to “try it out” in front of a supportive audience, this is the time to do it! Youth in particular are encouraged to perform, and light-hearted “Cabaret-like” numbers are most welcome.

FRIDAY, 8:15 **First Coached Ensembles Concert** Bunch: Killy Theatre
 This concert, and the Second Coached Ensembles Concert which takes place Saturday morning, is YOUR chance to present what you’ve been working on all week. Friday’s Coached Ensembles Concert includes some coached chamber groups plus **Early Music**.

* **MINI-CONCERTS:** Campers who have prepared a piece before or at camp and would like to perform it to a friendly audience should sign up for one of the mini-concerts. New campers in particular are encouraged to perform. Each mini-concert accommodates a few performances of 3-5 minutes each. Pieces requiring a piano should reserve a post-breakfast slot. Sign up for mini-concerts and Cabaret with **Heather Haydu**.

Please note:

Sign-up: In fairness to all, in particular to new campers, sign-up for mini-concerts will start after the Sunday Orientation. The Monday mini-concerts are an exception, and you may request to perform at one of the three Monday mini-concerts by emailing office@wcams.ca before camp.

Accompanists: Mini-concerts are intended for student performances. If you need a pianist to accompany you, there are several advanced pianists who attend camp. Please contact Irene at irene@percival-music.ca and she can provide you with a list of camper pianists who you can approach.

CLASSES FOR ADULTS (ages 15+)**MORNING CLASSES**

| | | | | |
|---------------------------------|------------------------------------------------------------------|--------------------------------------------------------|-----------------------------------------------------------------|--------------------------------------------|
| Session 1 8:40-9:35 | Instrumental Onlys (except percussion) (see page 8) | Voices Only Geordie Bunch: Classroom | Celtic Vocal Amy Bunch: Dance studio | |
| Session 2 9:40-10:35 | CHAMBER GROUPS (see page 8) | Percussion Only Greg Bunch: Killy Theatre | SATB Choir Patricia, acc. Eric Bunch: Dance studio | |
| Session 3 10:55-11:50 | CHAMBER GROUPS (see page 8) | Early Music KarenE Bunch: Dance studio | Barbershop Choir Kinza Bunch: Killy Theatre | |
| Session 4 12:00-1:00 | S Sectional Patricia A-257 | A Sectional Frances A-254 | T&B Sectional Geordie A-253 | |
| | Int. String Ensemble Ajtony Bunch: Dance studio | Adv. String Ensemble Nancy Bunch: Asper | Wind Ensemble Mike Bunch: Killy Theatre | Woodwind Ensemble Julia A-262 |

AFTERNOON CLASSES

| | | | | |
|-----------------------------------------------------------------------------|-----------------------------------------------------------------|--------------------------------------------------------------------|---------------------------------------------------------------------------------------------|-----------------------------------------------------|
| Session 5 2:00-2:55 Quiet Hour / Drop-in Hour | Body Awareness (not Thursday) Patricia A-262 | Strumming & Singing (not Thursday) Marco A-254 | Thurs. 1:45pm AGM All encouraged to come! (see page 8) Bunch: Asper Room | |
| | Music Lectures (see page 8) Bunch: Asper Room | Teen Pop Milo Bunch: Classroom | | |
| Session 6 3:30-4:30 | 3:00-4:30 Orchestra Ajtony Bunch: Killy Theatre | Drop-in Singing Frances A-257 | Vocal Masterclass Geordie Bunch: Classroom | Collaborative Music Kinza Bunch: Asper |
| Session 7 4:40-5:40 | Choral Orchestra Ajtony Bunch: Killy Theatre | Choir Geordie, acc. Eric Bunch: Dance Studio | Beg/Int. Celtic Instrumental Amy A-254 | Instrumental Jazz Mike Bunch: Asper |

EVENING CLASSES

| | | | | |
|--------------------------------------------------------------|--------------------------------------------------------|-----------------------------------------------------------------|-------------------------------------------------|------------------------------------------|
| Session 8 7:00-8:00 Friday: 6:45-7:45 | Orchestra 101 Ajtony Bunch: Killy Theatre | Vocal Jazz Frances, acc. Kinza Bunch: Dance Studio | Adv. Celtic Instrumental Amy A-254 | Big Band Scott Bunch: Asper |
|--------------------------------------------------------------|--------------------------------------------------------|-----------------------------------------------------------------|-------------------------------------------------|------------------------------------------|

Youth are welcome to join the afternoon and evening adult sessions.
Children may also enjoy Drop-in Singing.

CLASSES FOR ADULTS (continued)**SESSION 1: Instrumental ONLYs**

| | | | |
|----------------------------------------|------------------|---------------------------------|--------------|
| Violins Only Adv (Nancy) | A-251 | Clarinets Only (AK) | L-160 |
| Violins Only Beg/Int (Jeanette) | A-253 | Bassoons Only (Sophie) | L-159 |
| Violas Only (Tawnya) | A-254 | Recorders Only (KarenE) | A-252 |
| Upper Strings Only (Sarah) | A-255 | Saxophones Only (Julia) | A-262 |
| Cellos Only Adv (Marina) | A-257 | Trumpets Only (David) | A-261 |
| Cellos Only Beg/Int (Brian) | A-259 | Horns Only (Andrew) | A-164 |
| String Bases Only (Meaghan) | Bunch: Greenroom | Lower Brass Only (Scott) | A-168 |
| Flutes Only (Arin) | L-157 | Pianos Only (Kinza) | Bunch: Asper |
| Oboes Only (Heather) | L-158 | | |

SESSIONS 2 and 3: Chamber Groups

Chamber group classes are for campers who have pre-registered to be part of a chamber music group. If you have pre-registered for a chamber group, please check the group info on the whiteboard in the registration area (McNeill Lounge) on Sunday. It will list group members, coaches and state where and when the session takes place.

SESSION 5: Music Lectures and AGM

Monday: Ajtony Csaba: *SoundPainting - an interactive introduction*
Bring your voice or instrument!

Tuesday: Greg Samek: *Am I Really A Musician?*

Wednesday: Jeanette Singh: *Music As A Healing Modality*

Thursday @ 1:45: **Annual General Meeting**

As members of WCAMS, you are all invited and encouraged to attend the Annual General Meeting. We welcome and value your input. Please join us Thursday at 1:45pm in the Asper Room.

YOUTH and CHILDREN's Classes:

Youth classes should be attended by all those who will be entering grades 5 to 9 in September 2026.

Children's classes should be attended by all those entering grades 1 to 4 in September 2026.

| | YOUTH | CHILDREN |
|----------------------------------------|-----------------------------------------------------------------|----------------------------------------------------------------------------------------------------------------------|
| Session 1 8:40-9:35 | Percussion Greg Bunch: Killy Theatre | Children follow an integrated program of music, movement and dance Children A-258 KimH, Sarah-Lynne |
| Session 2 9:40-10:35 | Instrument Petting Zoo Marco Bunch: Classroom | |
| Session 3 10:55-11:50 | Choir Patricia A-257 | |
| Session 4 12:00-1:00 | Rock band Marco, Milo Bunch: Classroom & Greenroom | |

| | | |
|--------------|--------------------------------------------------------------------------------------------------------------------|-----------------------------------------|
| 3-6pm | Afternoon Games and Activities Children: Sierra with Gabrielle & Evelyn Youth: Sylvie with Anastasiia | outdoors or A-164; check the whiteboard |
|--------------|--------------------------------------------------------------------------------------------------------------------|-----------------------------------------|

SCHEDULE: SATURDAY

7:30 - 8:10

BREAKFAST

CHILDREN

8:30 - 11:00

SECOND COACHED ENSEMBLES CONCERT
(Chamber groups, Vocal Jazz)

Killy Theatre

8:45 - 10:45

Children's Program

A-258

10:45 - 11:00

Children's Snack

Crooks Hall

11:00 - 12:00

SNACK

11:00 - 12:00

Dress Rehearsal Child/Youth

Killy Theatre

12:05 - 12:20

Advanced String Ensemble Sound Check
Nancy

Killy Theatre

12:00 - 1:00

Supervised Activities

A-258 / Outdoors

12:25 - 12:40

Intermediate String Ensemble Sound Check
Ajtony

Killy Theatre

12:00 - 1:00

Body Awareness

A-262

Patricia

12:45 - 1:00

Woodwind Ensemble Sound Check
Julia

Killy Theatre

1:00 - 2:00

LUNCH

2:00 - 3:15

CHILDREN & YOUTH CONCERT

Killy Theatre

3:30 - 5:30

AFTERNOON CONCERT
(Barbershop, Advanced String Ensemble, Woodwind Ensemble, Orchestra 101, Big Band)

Killy Theatre

5:30 - 6:30

DINNER

7:00 - 10:00

FINAL CONCERT
(SATB Choir, Wind Ensemble, Intermediate String Ensemble, Orchestra, Large Choir)

Killy Theatre

10:00

PARTY (Celtic music, Jazz combo, Instrumental Jazz, Big Band)

Crooks Hall

DEPARTURE DAY: SUNDAY, JULY 26

8:00 - 9:00

BREAKFAST

Crooks Hall

9:00 - 10:00

CHECK-OUT: please return your name badge wallets

Crooks Hall

There are no music activities on the last day. Rooms must be vacated by 10:00am

SCHOLARSHIP AND BURSARY PROGRAM

As an inclusive organization, WCAMS welcomes amateur musicians of all ages and musical abilities. The Scholarship and Bursary program provides financial assistance to those who would otherwise find camp fees a barrier to their attendance.

Financial Assistance is funded through donations to the Annual fund, as well as disbursements from the WCAMS Endowment Fund established in 2014. This year over **\$18,000** in financial assistance was provided to **8 adults, 5 families** and **4 youth** to enable them to attend the 2026 Summer Music Camp.

We gratefully acknowledge the generosity of the following people who made donations to WCAMS between July 2025 and July 2026:

| Presto (\$500+) | Allegro (\$100-\$499) | Cantabile (\$10-\$99) |
|------------------|-----------------------|-----------------------|
| C Bates | Susan Baer | Jennifer Leong |
| Deborah Bush | Joan Carne | Marylke Nieuwenhuis |
| Claudia Morawetz | Edith Eaton | Claudia Peters |
| Veronica Roenitz | Peter Eccles | Phil Rogers |
| | Kathryn Fowler | Marc San Soucie |
| | David Gadd | Jon Stettner |
| | Mary M Gray | Deborah Torkko |
| | Tom Handley | Claire Weeks |
| | Lorraine Harland | Joan Youngquist |
| | Heather Holmes | Anonymous (8) |
| | | Elizabeth Bae |
| | | Rod Olafson |
| | | Philip Buri |
| | | Valerie Van Veen |
| | | Jane Clifton & Gary |
| | | Anonymous (9) |
| | | Fleming |
| | | Lisah D'Angelo |
| | | Linda Eterman |
| | | Chris Gleimius |
| | | Samantha Lazzari |
| | | Ricarda McDonald |
| | | Gail Milner |

GIVING TO WCAMS

Our Financial Assistance program is funded solely through donations. If you would like to help bring a musician to camp, please consider making a donation.

Ways to donate

Annual Fund

By making a donation on your camp application form, your contribution will help fund a camper to attend an upcoming camp. You can also donate to the Annual Fund throughout the year by making an e-transfer to donation@wcams.ca, and in the Message field, indicate your contact info, and that the e-transfer is a donation.

Endowment Fund

WCAMS has established an Endowment Fund, held at the Vancouver Foundation. Donations made to the Endowment Fund are held in perpetuity (i.e. can never be withdrawn). Vancouver Foundation provides WCAMS an annual distribution from the investments in the fund, generally a minimum of 4% of the fund value. Giving to the Endowment Fund means that your gift will provide support for our Financial Assistance program indefinitely.

You can make a donation to the Endowment Fund on-line at: www.vancouverfoundation.ca/wcams.

Legacy Giving - *Plant a seed for future generations!*

By leaving a gift to WCAMS in your will, you are sharing your joy of music-making with others for years to come. Vancouver Foundation offers free service for processing estate gifts. They suggest you word your gift as:

\$_____ to the **Vancouver Foundation** of suite 500 - 1075 West Georgia St., Vancouver, B.C. V6E 3C9, it being my wish that it will be applied by Vancouver Foundation to the **West Coast Amateur Musicians Society (WCAMS) Fund** www.vancouverfoundation.ca/wcams

Read more about giving to WCAMS on our web site, under the [Supporters menu](#).

Thank you in advance for your generosity!